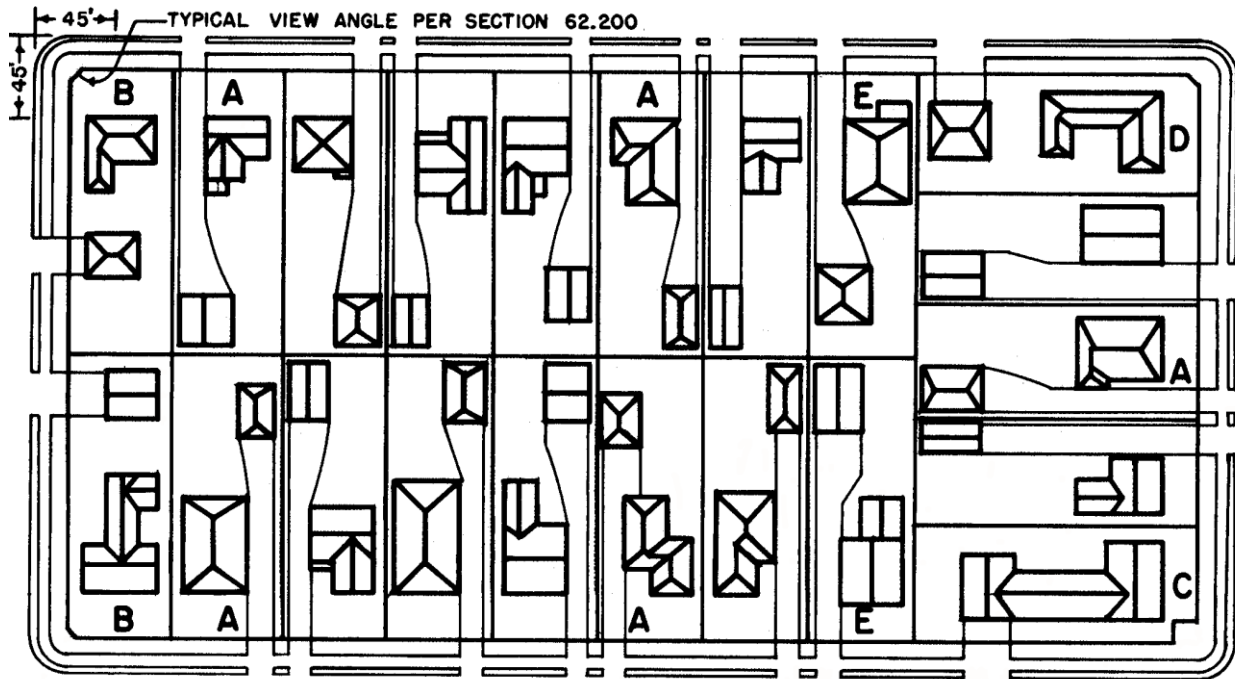


## HEIGHTS OF FENCES IN RESIDENTIAL ZONES



FENCE HEIGHTS IN REQUIRED YARDS

**FRONT YARD FENCES**

ZONE: A, RA - 6 FT. \*

R, RW - 3.5 FT. \*

**SIDE AND REAR YARD FENCES**

ZONE: A, RA, R - 8 FT. IF LOT WIDTH IS 40 FT. OR GREATER AND NOT IN HILLSIDE AREA.

6 FT. IF LOT IS LESS THAN 40 FT. OR IN THE HILLSIDE AREA

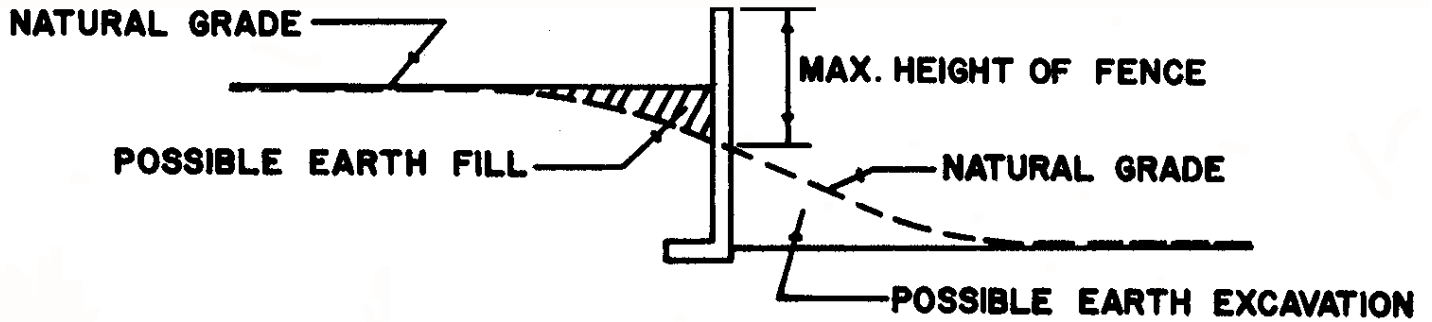
\* 8 FT. FENCE PERMITTED WITH DEPARTMENT OF CITY PLANNING APPROVAL. PERMIT REQUIRED FOR MASONRY OR CONCRETE FENCES OVER 3 ½ FT. HIGH.

CAUTION! DO NOT ASSUME INSIDE EDGE OF THE SIDEWALK AS THE PROPERTY LINE.

FOR "PREVAILING SETBACK" SEE THE CITY OF LOS ANGELES COMPREHENSIVE ZONING CODE.

As a covered entity under Title II of the Americans with Disabilities Act, the City of Los Angeles does not discriminate on the basis of disability and, upon request, will provide reasonable accommodation to ensure equal access to its programs, services and activities. For efficient handling of information internally and in the internet, conversion to this new format of code related and administrative information bulletins including MGD and RGA that were previously issued will allow flexibility and timely distribution of information to the public.

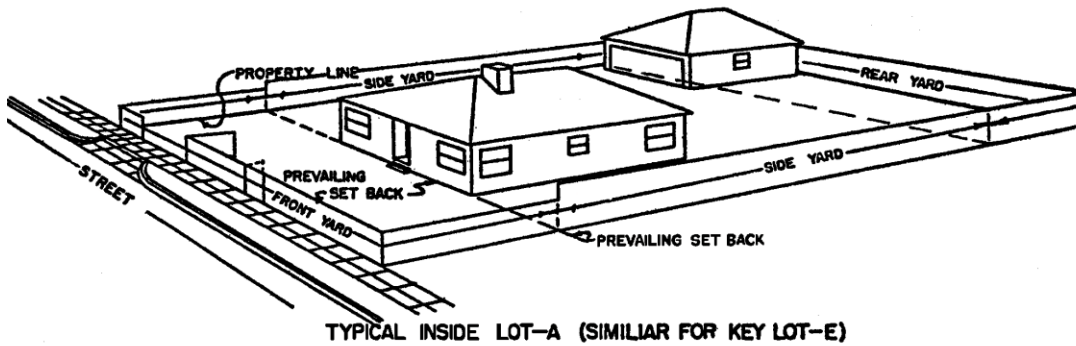
**METHOD OF DETERMINING MAXIMUM FENCE HEIGHT ON SLOPING GROUND**



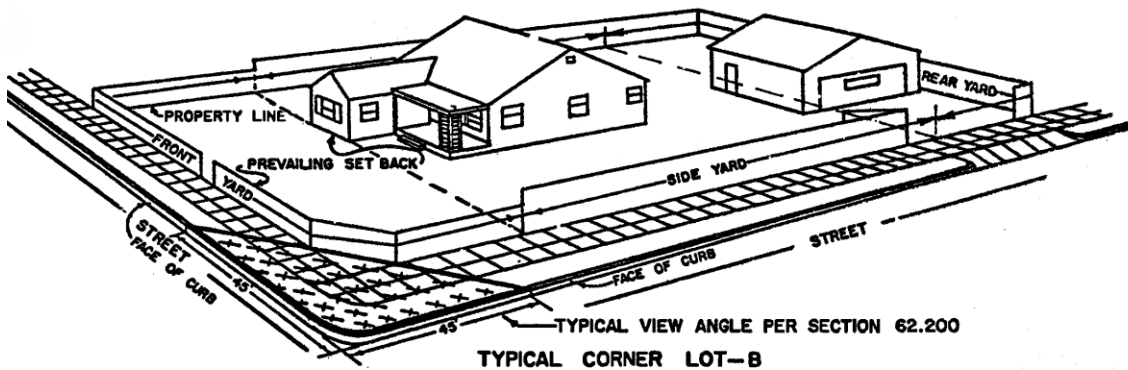
For additional information regarding this bulletin, please contact the plan check supervisor at:

|                       |                     |                     |
|-----------------------|---------------------|---------------------|
| Metro Office          | Van Nuys            | West Los Angeles    |
| 201 N Figueroa St.    | 6262 Van Nuys Blvd. | 1828 Sawtelle Blvd. |
| 8 <sup>th</sup> Floor | Room 251            | 2nd Floor           |
| (888) 524-2845        | (888) 524-2845      | (888) 524-2845      |

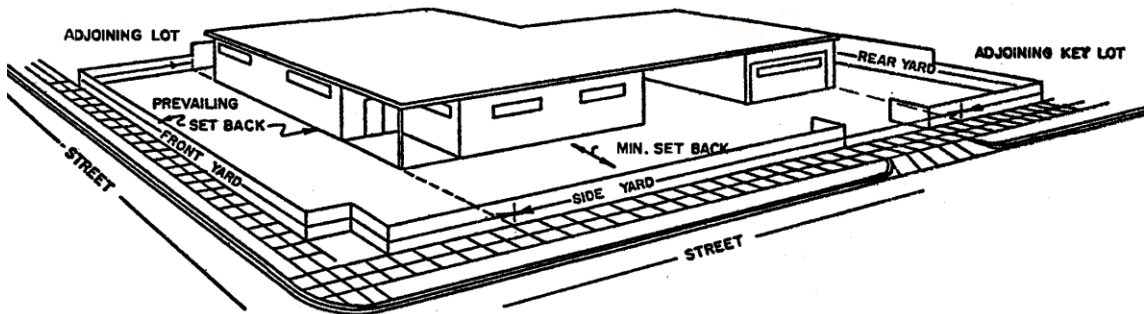
For telephone inquiries originating from outside of Los Angeles County, call (213) 482-0000.



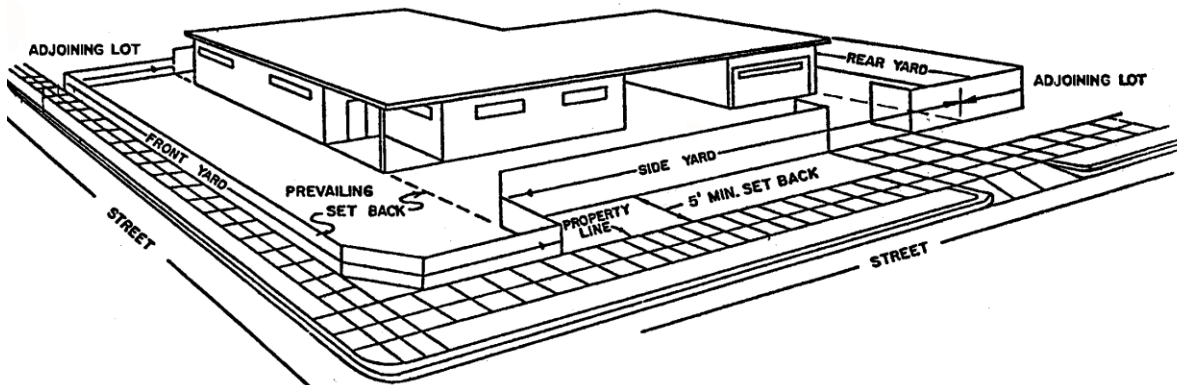
**TYPICAL INSIDE LOT-A (SIMILIAR FOR KEY LOT-E)**



**TYPICAL CORNER LOT-B**



**TYPICAL REVERSE CORNER LOT-C**



**TYPICAL REVERSE CORNER LOT-D**

As a covered entity under Title II of the Americans with Disabilities Act, the City of Los Angeles does not discriminate on the basis of disability and, upon request, will provide reasonable accommodation to ensure equal access to its programs, services and activities. For efficient handling of information internally and in the internet, conversion to this new format of code related and administrative information bulletins including MGD and RGA that were previously issued will allow flexibility and timely distribution of information to the public.